

Rehab Facilities: Case Management  
Resource Guide  
[www.cmrg.com](http://www.cmrg.com)

SCI News & More: New Mobility Magazine  
[www.newmobility.com](http://www.newmobility.com)

Spinal Cord Injury Update  
[depts.washington.edu/rehab/sci/](http://depts.washington.edu/rehab/sci/)

NRH Field Guide to Choosing a High-Quality Medical Rehabilitation Program  
[www.naric.com/public/choosingquality.pdf](http://www.naric.com/public/choosingquality.pdf)

*Quick Picks from the Librarians at the National Rehabilitation Information Center*

## Information Resources for Spinal Cord Injury



NARIC is a project of HeiTech Services, Inc., and is funded by the National Institute on Disability and Rehabilitation Research under project number ED-OSE-10-0074.

HeiTech Services, Inc., is a woman- and service-disabled veteran-owned business. For corporate qualifications and references, visit us at [heitechservices.com](http://heitechservices.com) or call 301/918-9500.

NARIC

8400 Corporate Drive, Suite 500  
Landover, MD 20785

800/346-2742 (V); 301/459-5900 (V);  
301/459-5984 (TTY); 301/459-4263 (Fax)  
[naricinfo@heitechservices.com](mailto:naricinfo@heitechservices.com)  
[www.naric.com](http://www.naric.com)



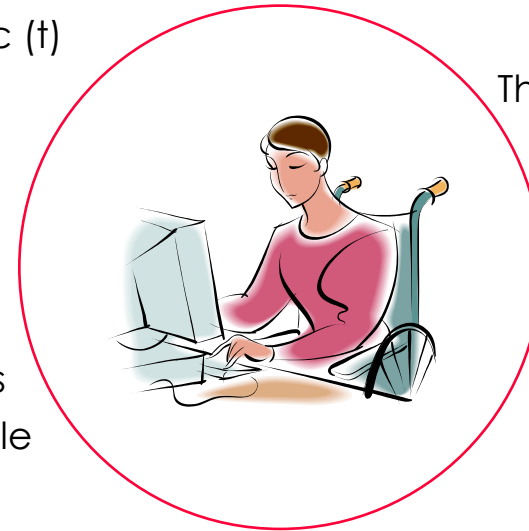
NARIC

[www.naric.com](http://www.naric.com)

## Living beyond Spinal Cord Injury

Spinal cord injury (SCI) is classified by where along the spinal column the injury occurs from top or cervical (c), through middle or thoracic (t) and lumbar (l), to bottom or sacral (s). Injury along any point in the spine can cause disability, from loss of feeling or muscle

control, to paralysis. With the help of rehabilitation and assistive technology, it is possible to live a full life after injury.



These and other resources are also available from our "browse by topic" webpage at [www.naric.com](http://www.naric.com)!

## Health and Wellness

Spinal Cord Injury Research @ Craig Hospital  
3425 South Clarkson Street  
Englewood, CO 80110  
Phone: 303/789-8308 (V)  
www.craig-hospital.org  
Craig offers information to assist SCI survivors, caregivers, and researchers in the areas of health maintenance, lifestyle choices, and improving quality of life. Web site features the Wellness and Risk Assessment Profile, which can be completed online.

Spinal Cord Injury Information Network  
University of Alabama/Birmingham  
Spain Rehabilitation Center  
619 19th Street South - SRC529  
Birmingham, AL 35249-7330  
Phone: 205/934-3283  
TTY: 205/934-4691  
Fax: 205/975-4642  
sciweb@uab.edu  
www.spinalcord.uab.edu



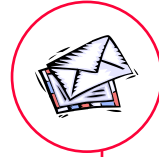
Center disseminates information based on research activities surrounding the prevention and treatment of secondary complications of SCI. Topics include urology, respiratory health, and treatments for pain and depression. Web site contains an extensive variety of reports and fact sheets.

## Rehabilitation Research

Model Systems Knowledge Translation Center  
University of Washington  
Center for Human Development and Disability,  
Center for Technology and Disability Studies.  
1959 NE Pacific Street, HSB BB-919  
Box 356490.  
Seattle, WA 98195.  
Phone: 206/543-3677  
Fax: 206/543-4779

msktc@u.washington.edu  
msktc.washington.edu  
The model systems research the spectrum of care from point of injury, through rehabilitation, to integration back into the community. This center collects, maintains, and disseminates consumer and professional education materials produced by the MSCIS Centers and Collaborative Research projects in SCI. Website includes presentation, publications, educational materials, newsletters, and links to individual projects across the country.

National Institute of Neurological Disorders and Stroke  
National Institutes of Health  
Neurological Institute  
P.O. Box 5801  
Bethesda, MD 20824  
Phone: 800/352-9424 (V)  
TTY: 301/468-5981  
www.ninds.nih.gov  
Provides scientific documents, research reports and publications. Web site includes up-to-date research findings, health information, and a publications guide.



The Miami Project to Cure Paralysis  
University of Miami School of Medicine  
P.O. Box 016960 (R-48)  
Miami, FL 33101-6960  
Phone: 800/782-6387 (V)  
Fax: 305/243-6017  
www.miamiproject.miami.edu  
A science and clinical research effort dedicated to finding new treatments and ultimately, a cure for paralysis. Project offers research and rehabilitation information packets. Web site includes project overview, newsletter and latest research findings.

## Information and Support

National Spinal Cord Injury Association  
6701 Democracy Boulevard,  
Suite 300-9  
Bethesda, MD 20817  
Phone: 800/962-9629 (V);  
301/214/4006 (V)  
Fax: 301/990-0445  
info@spinalcord.org  
www.spinalcord.org  
Serves as a comprehensive information source for anyone effected by spinal cord injury. Referrals and consultations are available through the national office or one of the many state chapters. Web site includes fact sheets, rehabilitation centers by state, and state chapter information.



Paralyzed Veterans of America (PVA)  
801 18th Street, NW  
Washington, DC 20006-3517  
Phone: 800/424-8200 (V), 800/795-4327 (TTY)  
info@pva.org  
www.pva.org  
Advocacy and information association with brochures covering such topics as accessibility, legislation, assistive technology, and sports. Web site includes SCI related news, research and treatment guides, chapter information and Internet links.

Reeve Paralysis Resource Center  
636 Morris Turnpike, Suite 3A  
Short Hills, NJ 07078  
800/539-7309  
www.paralysis.org  
PRC offers information and referral on spinal cord injury, paralysis, and mobility related disabilities, including a free 336-page Paralysis Resource Guide. PRC also offers a lending library, videos, multicultural and military out-

## Assistive Technology

AbleData  
8630 Fenton Street, Suite 930  
Silver Spring, MD 20910  
Phone: 800/227-0216  
TTY: 301/608-8912  
Fax: 301/608-8958  
abledata@macrointernational.com  
www.abledata.com  
Provides computerized searches for assistive devices, products and equipment. Searches include distributor information and product descriptions. Fact sheets and information on catalogs are also available. The database can be searched from the ABLEDATA web site.

Assistivetechnet.net  
Georgia Institute of Technology  
490 10th Street NW  
Atlanta, GA 30332-0156  
Phone: 800/726-9119 (V/TTY)  
Fax: 404/894-9320  
catea@coa.gatech.edu  
www.assistivetechnet.net  
An information resource providing up-to-date, thorough information on AT, adaptive environments, and community resources. The database is both browsable and keyword searchable.



8400 Corporate Drive, Suite 500  
Landover, MD 20785  
800/346-2742 (V); 301/459-5900 (V);  
301/459-5984 (TTY); 301/459-4263 (Fax)  
naricinfo@heitechservices.com  
www.naric.com